

VIEWMEDIC CLINIO TOUCH



ALL-IN-ONE MEDICAL COMPUTER
FOR RIS, HIS, PACS AND CO.

CLINIO® TOUCH – The all-in-one medical computer

Performance and high availability

The new second-generation CLINIO TOUCH offers you a high degree of future security and reliability for applications such as RIS, HIS, PACS and many more.

Robust and highly available industrial components are used in the CLINIO TOUCH.

Thanks to Intel's latest QM67 chipset, you benefit from all the advantages of Intel's latest Core technology for i3, i5 and i7 second-generation processors.

When combined with Intel mobile CPUs, this ensures smooth operations in several applications at once. In addition, the mobile CPUs are extremely energy-efficient.

Mobile CPUs from Intel were developed for demanding applications, as are common in the automotive, transportation and aviation sectors. They are more temperature-resistant than desktop CPUs and extremely well suited for 24/7 use.



Overview of system specifications

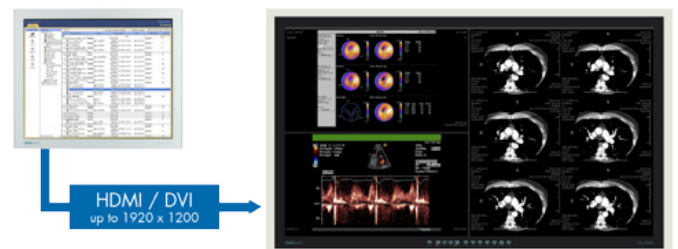
- » Projected Capacitive Touch
- » Intel Core i3, i5 or i7 processor (2nd generation)
- » Intel QM67 chipset
- » 2 GB DDR3 RAM 1066 MHz, expandable to 8 GB
- » 320 GB HDD, 2.5", 8 MB cache
- » 2 x Gigabit Ethernet
- » 2 x USB 2.0, 2 x USB 3.0
- » 2 x RS-232 (optional 2x 4 kV, isolated)
- » Port for second monitor

Optional extensions

- » SSD (Solid State Drive)
- » IEEE 802.11 b/g/n WLAN kit
- » Two isolated RS-232 interfaces

Extend your desktop

Every CLINIO TOUCH has a HDMI and VGA output. These ports allow you to clone or extend your desktop to a second monitor.



Intel Dual HD graphics chip supports the simultaneous display of two screens with resolutions up to 1920 x 1200 pixels.

Hygienic design thanks to fanless cooling system

The CLINIO TOUCH operates noiselessly and entirely without a fan. Plus, it does not feature any unhygienic ventilation slots. The protective glass is installed flush with the front panel to provide protection against splashes and dust.

Would you like to experience our products live or test them in your working environment?

We would be happy to present our products to you free of charge and without any obligation at your company. After the presentation, we will provide you the CLINIO TOUCH for further in-depth testing and evaluation.

Technical specifications

All-in-one computer

CLINIO TOUCH 219C

CLINIO TOUCH 222C



Part number	VCL219CT31	VCL219CT51	VCL219CT71	VCL222CT31	VCL222CT51	VCL222CT71
Application	All-in-one computer; can be used for many applications such as RIS, HIS, PACS (not diagnostics), LIS and EHR					
PC system						
Chipset	Intel® QM67					
CPU	i3-2330E	i5-2540M	i7-2620M	i3-2330E	i5-2540M	i7-2620M
Clock speed	2.2 GHz	2.6 GHz	2.7 GHz	2.2 GHz	2.6 GHz	2.7 GHz
Max. turbo frequency	-	3.3 GHz	3.4 GHz	-	3.3 GHz	3.4 GHz
Intel Smart Cache	3 MB	3 MB	4 MB	3 MB	3 MB	4 MB
RAM	2 GB dual channel DDR3, 800/1066 MHz (expandable to 8 GB, two slots, max. 3 GB recommended for 32-bit operating systems)					
HDD	1 x 320 GB S-ATA2 HDD, 5400 rpm, 8 MB cache, optional second and/or larger HDD or SSD (Solid State Disk)					
Network (LAN)	2 x Intel® GbE, of which 1 x with Intel iATM 7.0 support					
Ports	2 x RJ45 (LAN), 2 x RS-232, optionally up to 3 x RS-232 (of which 2 x 4 kV, isolated), 2 x external USB 2.0, 2 x USB 3.0					
Expansion slot	1 x Mini-PCIe for internal expansion cards, built-in on request					
Graphics	Intel® Dual HD graphics, up to 1920 x 1200 pixels simultaneously					
Output for second display	1 x HDMI and 1 x VGA up to 1920 x 1200. Two images can be displayed simultaneously.					
Display						
Display size	48 cm (19") colour LCD TFT			54.61 cm (21.5") colour LCD TFT with LED backlight		
Brightness max.	300 cd/m ²			250 cd/m ²		
Contrast ratio	1300:1			1000:1		
Viewing angle	horizontal: 178°/vertical: 178°			horizontal: 178°/vertical: 178°		
Pixel resolution	1280 x 1024 (5:4)			1920 x 1080 (16:9)		
Response time	8 ms			8 ms		
General device specifications						
Weight	approx. 8,25 kg w/o base or power supply			approx. 7,75 kg w/o base or power supply		
Dimensions (HxWxD)	352 x 427 x 93 mm			317 x 521 x 93 mm		
Power supply	Internal AC power supply, 90-250 V, 50/60 Hz					
Power consumption	Standby < 5 W/approx. 50 when in use/100% power max. 83 W			Standby < 5 W/approx. 56 when in use/100% power max. 85 W		
Mounting hardware	100 mm mounting hardware, M4 threaded sockets					
Warranty (bring-in)	24 months with bring-in service					
Safety						
Protective glass and disinfection	Protective glass with anti-reflective coating, no ventilation slots on the rear meaning all surfaces can be cleaned					
Safety tests	CE, IEC 60601-1, IEC 60601-1-2					

Optional accessories for the CLINIO all-in-one computer

Base	Massive base, colour RAL 9010, fixed height, fixed tilt angle of 18°
Wall brackets	Various wall brackets with a wide range of functions are available on request.
External power supply	12 V, 11.25 A, max. 135 watts, dimensions: HxWxD 99.0 x 180.0 x 52.0 mm, weight: 950 g
RS-232 ports	Up to two galvanically isolated (4 kV) RS-232 ports available
Network isolator	RJ45 in/out (LAN 10/100/1000 Mbps), IEEE 802.3, dielectric strength: 5 kV, IEC 60601-1, IEC 60601-1-2
WLAN	Integrated IEEE802.11b/g/n WLAN module, up to 150 Mbps, two enhanced hygienic antennas on the top
RAM	Main memory expandable to 8 GB (ICH8M chipset, max. 4 GB main memory); we recommend a maximum of 3 GB for 32-bit operating systems.

Contact



Germany

Rein Medical GmbH
Jakob-Krebs-Straße 124
47877 Willich

Phone +49 (0) 2156 / 49 49 0
Fax +49 (0) 2156 / 49 49 49

www.reinmedical.com
info@reinmedical.com

Switzerland

Rein Medical AG
Büfelderstrasse 1
CH-8370 Simach

Phone +41 (0) 71 / 929 55 99
Fax +41 (0) 71 / 929 55 90

www.reinmedical.com
info.ch@reinmedical.com

Spain

Rein Medical System, S.A.
C/ Téllez, 30 Posterior
1ª Planta, oficina 2-3
28007 Madrid

Phone +34 (0) 91 / 530 88 24
Fax +34 (0) 91 / 574 32 93

www.reinmedical.com
info.es@reinmedical.com